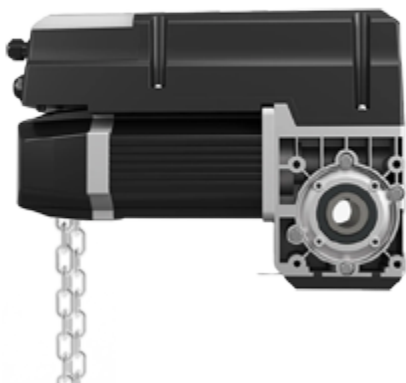


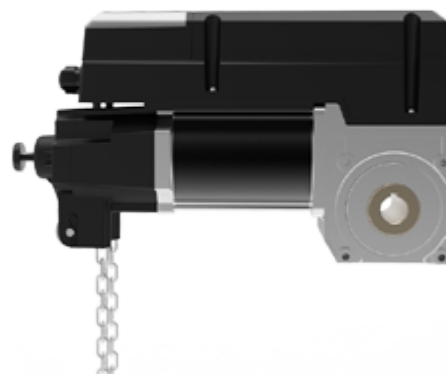
# CUBE 50/70

NEW MOTORS  
FOR INDY



## CUBE 50

- Industrialmotor
- Emergency chain operation
- Protection of bottom edge with light barrier incl. connection box and cable
- 24V DC Technology
- SoftStart and SoftStop function
- For doors with max. Area 12 m<sup>2</sup>



## CUBE 70

- Industrialmotor
- Emergency chain operation
- Protection of bottom edge with light barrier incl. connection box and cable
- 24V DC Technology
- SoftStart and SoftStop function
- **For doors with max. Area 20 m<sup>2</sup>**
- **Higher torque**

### Motor unit

- Readable two-digit display
- Easy operating
- Connection to all accessories
- Identical for both motors



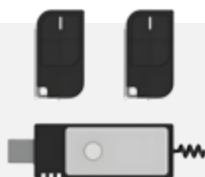
**Door configurator  
online**  
[www.sTOORe.cz](http://www.sTOORe.cz)

| Parametes                       | CUBE 50                          | CUBE 70                          |
|---------------------------------|----------------------------------|----------------------------------|
| Maximum output torque           | 50 nm                            | 70 nm                            |
| Rated output torque             | 35 nm                            | 50 nm                            |
| Door size                       | 12 m <sup>2</sup>                | 20 m <sup>2</sup>                |
| Input voltage                   | 400V 50Hz (230V 50Hz)            | 400V 50Hz (230V 50Hz)            |
| Control system                  | 24V DC                           | 24V DC                           |
| Motor power                     | 0.45 KW                          | 0.55 KW                          |
| Static holding torque           | 400 nm                           | 400 nm                           |
| Max. Output speed               | 24 RPM – 32 RPM                  | 24 RPM – 32 RPM                  |
| Shaft diameter                  | Ø 25.4 mm                        | Ø 25.4 mm                        |
| Thermal protection temperature  | 105 °C                           | 105 °C                           |
| Continuous sound pressure level | <70 DB                           | <70 DB                           |
| Max. Cycles per hour            | 20                               | 20                               |
| IP Protection class             | IP54                             | IP54                             |
| Temperature range               | -20 °C ~ 60 °C                   | -20 °C ~ 60 °C                   |
| Standard Kit                    | Drive motor & Wired Control box  | Drive motor & Wired Control box  |
| Quick release with rope         | Inclusive (2 m + 2 m)            | Inclusive (2 m + 2 m)            |
| Emergency chain operation       | Inclusive (2,5 m + 2,5 m)        | Inclusive (2,5 m + 2,5 m)        |
| Light barrier with spiral cable | Inclusive (up to 8 m door width) | Inclusive (up to 8 m door width) |

## ACCESSORIES



Chain prologation including chain links



Transmitter and receiver for remote control



Emergency stop for the cover of the motor unit



Connection cable between the motor and the drive unit (6m to 8m)



Emergency cable prologation (4m)



Prologation of the power supply cable (3,5m to 6,5m)